

Name: \_\_\_\_\_

## GCSE (1 – 9)

# Units and Conversions

### Instructions

- Use **black** ink or ball-point pen.
- Answer all questions.
- Answer the questions in the spaces provided  
– *there may be more space than you need.*
- Diagrams are **NOT** accurately drawn, unless otherwise indicated.
- You must **show all your working out.**

### Information

- The marks for each question are shown in brackets  
– *use this as a guide as to how much time to spend on each question.*

### Advice

- Read each question carefully before you start to answer it.
- Keep an eye on the time.
- Try to answer every question.
- Check your answers if you have time at the end

1 Change 2580 grams to kilograms.

..... 2.58 ..... kg

(Total for question 1 is 1 mark)

---

2 Change 1.6 kilometres to metres.

..... 1600 ..... m

(Total for question 2 is 1 mark)

---

3 Change 48 cm to mm.

..... 480 ..... mm

(Total for question 3 is 1 mark)

---

4 Change 520 millilitres to litres

..... 0.52 ..... litres

(Total for question 4 is 1 mark)

---

5 Change 0.87 kilograms to grams.

..... 870 ..... grams

(Total for question 5 is 1 mark)

---

6 Change 640 cm to metres.

..... 6.4 ..... metres

(Total for question 6 is 1 mark)

---

7 Change 25 metres to cm.

..... 2500 ..... cm

(Total for question 7 is 1 mark)

---

8 Change 800 metres to kilometres.

..... 0.8 ..... km

(Total for question 8 is 1 mark)

---

9 Change 75 mm to cm.

..... 7.5 ..... cm

(Total for question 9 is 1 mark)

---

10 Change 2.5 litres to millilitres

..... 2500 ..... millilitres

(Total for question 10 is 1 mark)

---

11 Change 920 millilitres to litres

..... 0.92 ..... litres

(Total for question 11 is 1 mark)

---

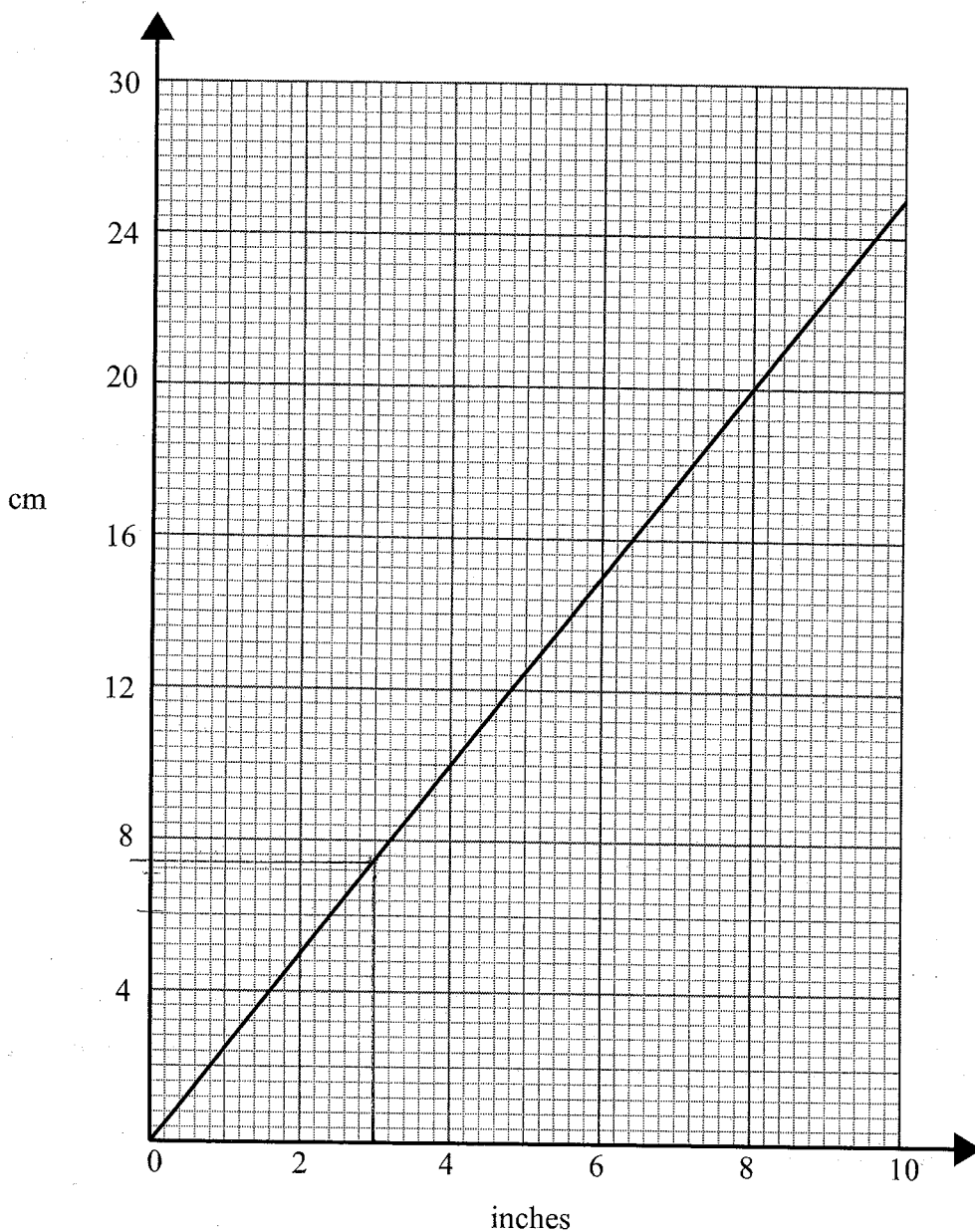
12 Change 75 kilograms to grams.

..... 75000 ..... grams

(Total for question 12 is 1 mark)

---

13 You can use this graph to change between inches and centimetres.



(a) Change 3 inches to cm.

(b) Change 50 cm to inches

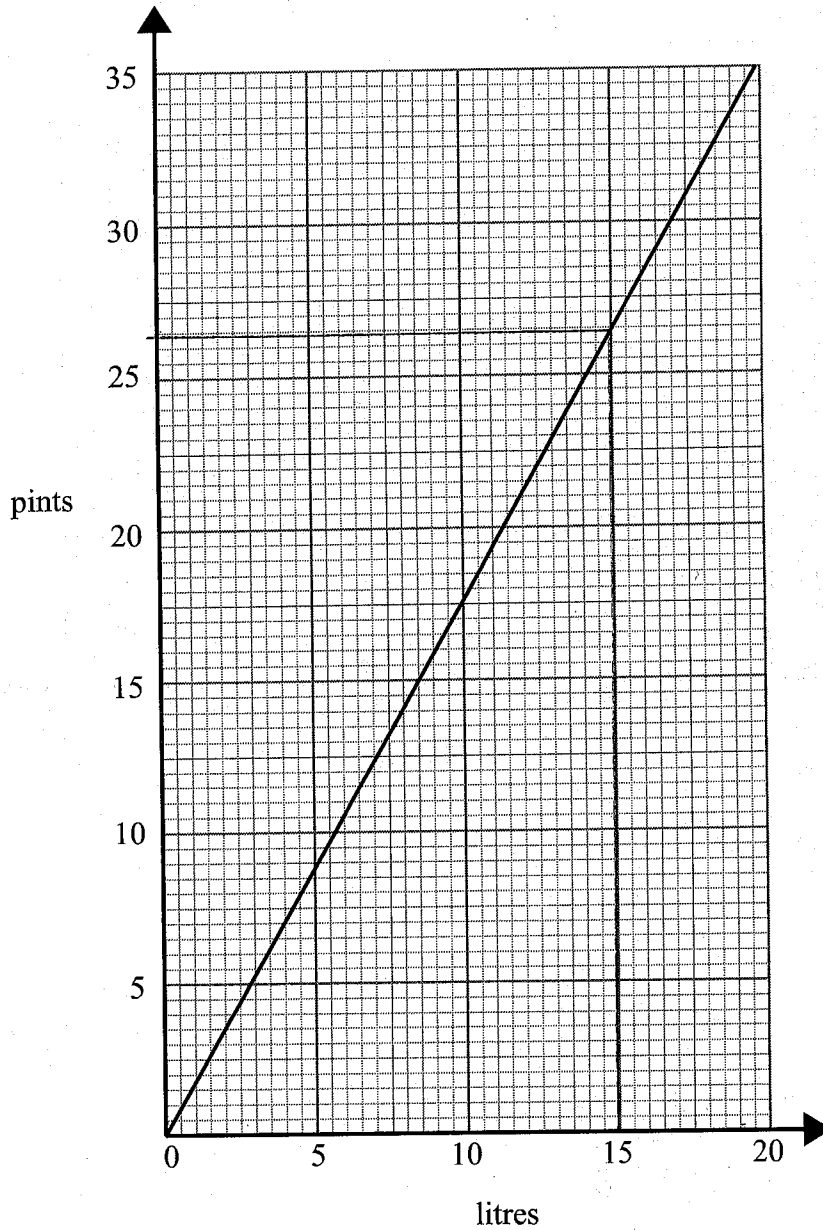
.....7.5..... cm  
 [7.4 - 7.6]<sup>(1)</sup>

20 cm = 8 inches  
 10 cm = 4 inches  
 50 cm = 20 inches

.....20..... inches  
 (2)

(Total for question 13 is 3 marks)

14 You can use this graph to change between litres and pints.



(a) Change 15 litres to pints.

..... 26.4 ..... pints  
 [26.3 - 26.5]<sup>(1)</sup>

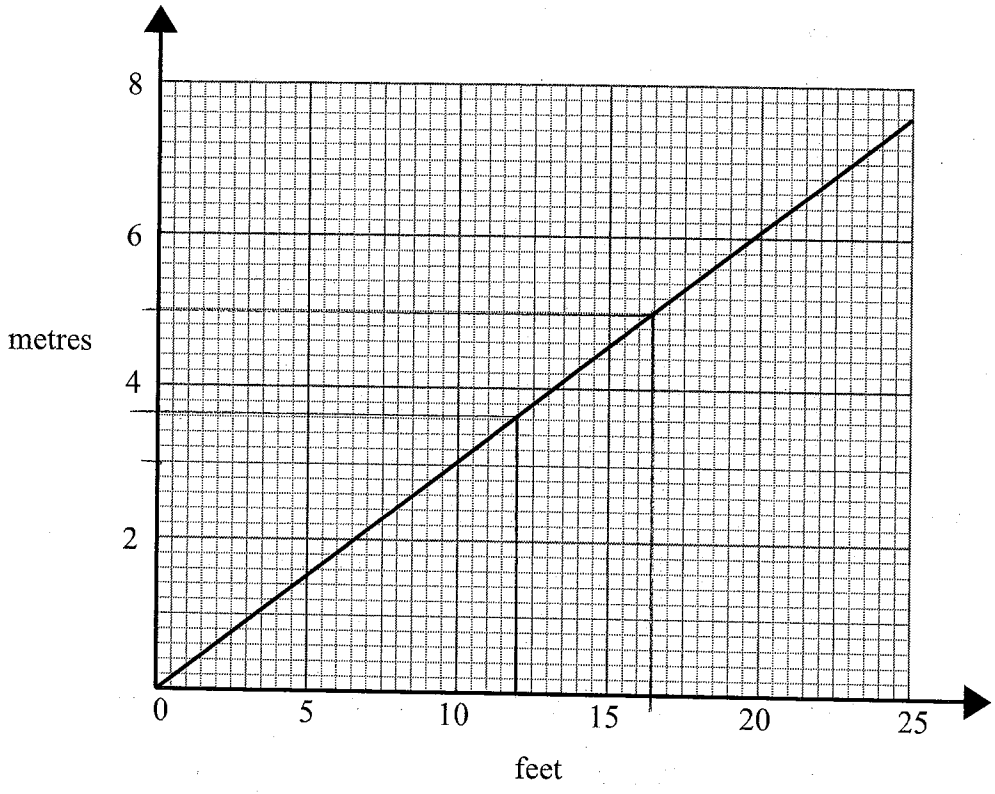
(b) Change 70 pints to litres.

35 pints = 19.8 l  
 70 pints = 39.6 l

..... 39.6 ..... litres  
 39.5 - 39.7<sup>(2)</sup>

(Total for question 14 is 3 marks)

15 You can use this graph to change between feet and metres.



(a) Change 12 feet to metres.

(b) Change 25 metres to feet.

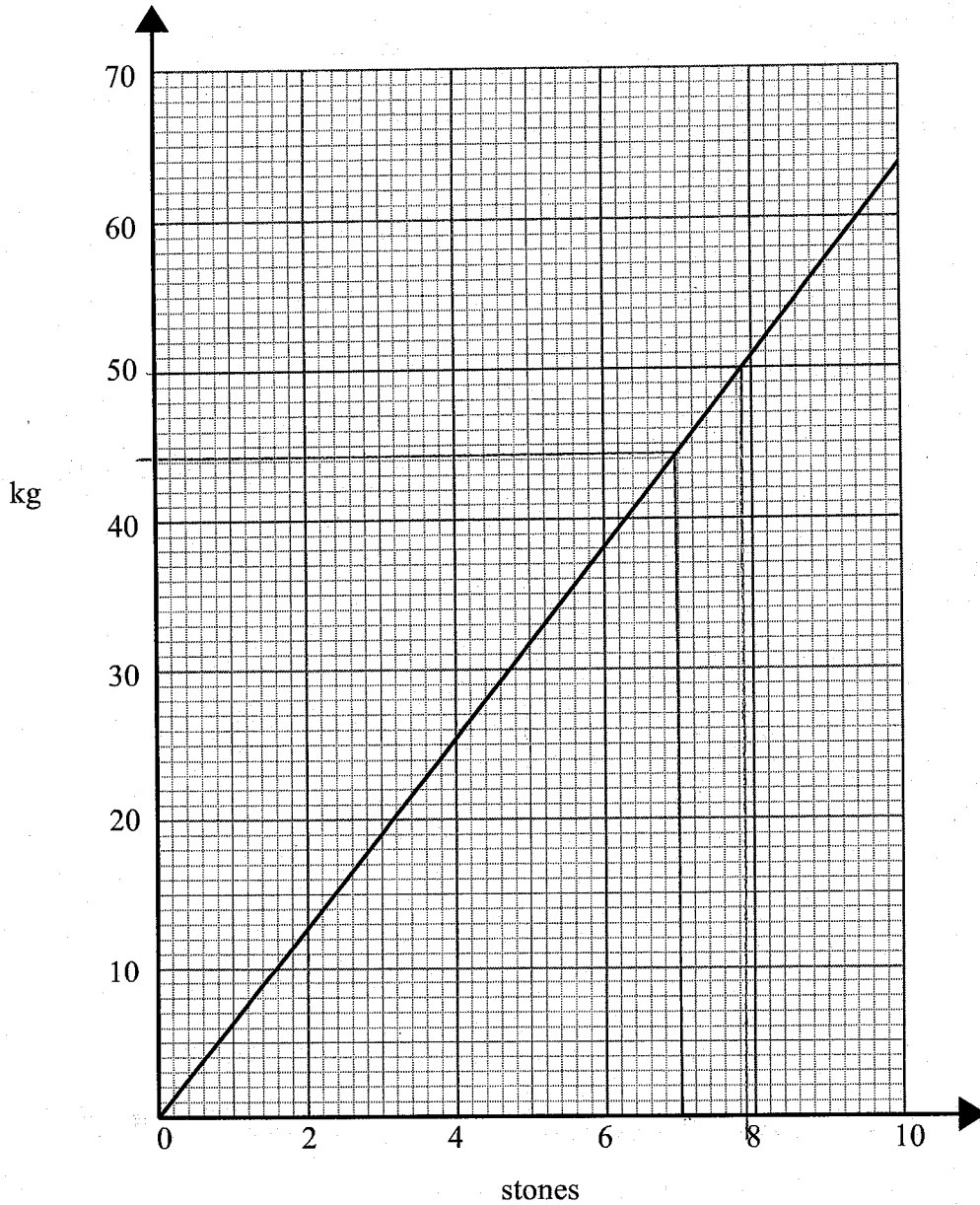
$$\begin{array}{r}
 5m = 16.5 \text{ feet} \\
 \times 5 \quad \quad \times 5 \\
 \hline
 25m = 82.5
 \end{array}$$

$$\begin{array}{r}
 3.6 \text{ m} \\
 \text{---} \\
 \text{feet} \\
 (1) \\
 [3.6 - 3.7]
 \end{array}$$

$$\begin{array}{r}
 82.5 \text{ feet} \\
 \text{---} \\
 \text{metres} \\
 [81 - 83] (2)
 \end{array}$$

(Total for question 15 is 3 marks)

16 You can use this graph to change between stones and kilograms.



(a) Change 7 stones to kilograms.

$\dots 44.4 \dots$  kg

(b) Change 100 kilograms to stones.

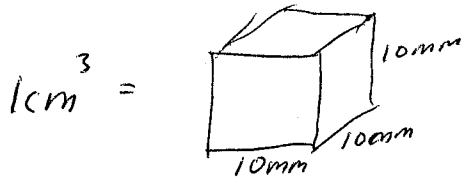
$[44 - 45]^{(1)}$

$50 \text{ kg} = 7.9 \text{ stone}$   
 $100 \text{ kg} = 15.8$

$\dots 15.8 \dots$  stones  
 $15.7 - 15.9(2)$

(Total for question 16 is 3 marks)

17 Write  $35 \text{ cm}^3$  in  $\text{mm}^3$

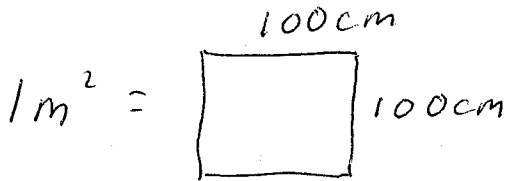


$1 \text{ cm}^3 = 1000 \text{ mm}^3$

.....  $35000$  .....  $\text{mm}^3$

(Total for question 17 is 1 mark)

18 Write  $4.5 \text{ m}^2$  in  $\text{cm}^2$

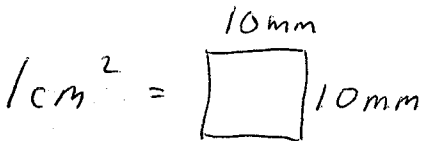


$1 \text{ m}^2 = 10000 \text{ cm}^2$

.....  $45000$  .....  $\text{cm}^2$

(Total for question 18 is 1 mark)

19 Write  $90 \text{ mm}^2$  in  $\text{cm}^2$



$1 \text{ cm}^2 = 100 \text{ mm}^2$

.....  $0.9$  .....  $\text{cm}^2$

(Total for question 19 is 1 mark)